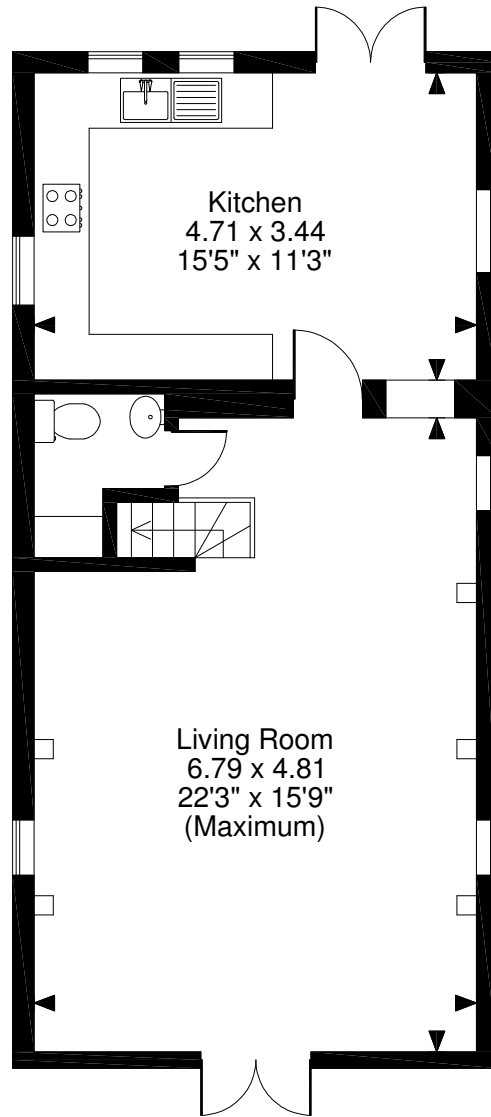
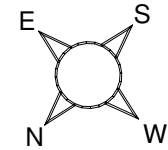


Hazel Farm, The Granary, Dymock Road, Ledbury

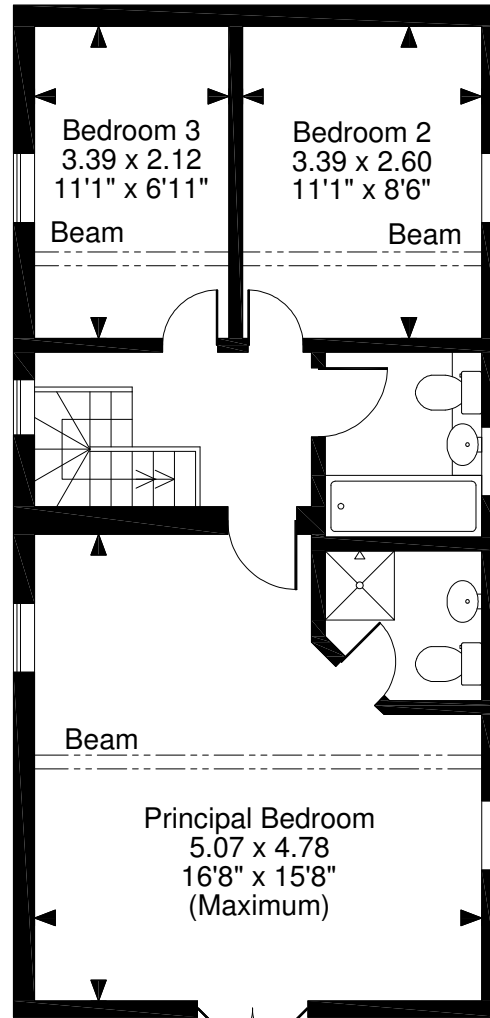
Approximate Gross Internal Area

Main House = 1099 Sq Ft/102 Sq M

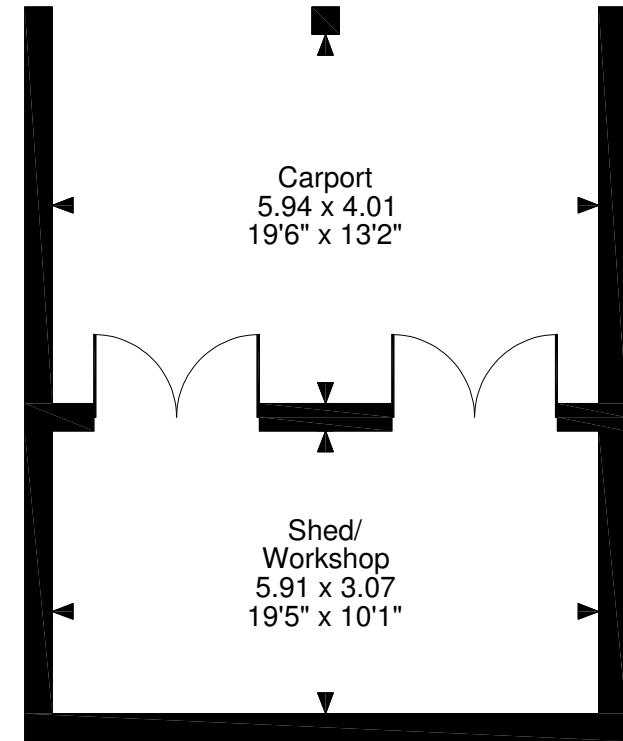
Carport & Shed/Workshop = 472 Sq Ft/44 Sq M



Ground Floor



First Floor



Outbuilding

FOR ILLUSTRATIVE PURPOSES ONLY - NOT TO SCALE

The position & size of doors, windows, appliances and other features are approximate only.

© ehouse. Unauthorised reproduction prohibited. Drawing ref. dig/8450115/SS